

# CORNERSTONE COTTAGE SERIES



A collection of unique floor plans  
designed for you.

*"North of the Tension Zone."*



P.O. Box 997  
Eagle River, WI 54521  
(715) 479-0001

P.O. Box 997  
Rhinelander, WI 54501  
(715) 362-7888

P.O. Box 816  
Minocqua, WI 54548  
(715) 356-0001

*"When you think about building, think CornerStone"*

# THE CORNERSTONE COTTAGE SERIES

We welcome you to use this booklet as a tool as you plan your deep woods cabin retreat or “up-north” lake front cottage. These unique homes are designed to inspire and spark your ideas for us to build upon. CornerStone Custom Builders Inc., has over 20 years of residential construction experience and a strong reputation of providing outstanding workmanship and great value at fair prices. We are highly regarded as an innovator in the Northwoods construction field and held in high standing around northern Wisconsin and the upper peninsula of Michigan.

We have our own in-house designer on staff to assist in making your vision a reality, whether it is one of our stock Cottage Series floor plans or your own custom design. If you have any additional building or design questions, we encourage you to stop at one of our three model home locations or contact any of our CornerStone Staff so they may assist you. We look forward to working with you!

With kindest regards,  
The CornerStone Team



# COTTAGE SERIES SPECIFICATIONS

## ALLOWANCE BASED ITEMS

- Permits & Inspection Fees
- Excavation, Backfill & Grading
- Septic 2 Bedroom System
- 6" Drilled Well up to 50'
- Light Fixtures
- Bath Fixtures
- Cabinets
- Flooring
- Closets

## FOUNDATION

- 8' Poured Concrete Walls & Footings
- Damp Proofed
- 1½" Thermax Installed on Interior

## FLOOR SYSTEM

- 2 x10 Floor Joists 16" O.C.
- ¾" T&G OSB Sheathing:  
Glued-Nailed

## EXTERIOR WALLS

- 2 x 6 Studs 16" O.C.
- 8' 1 1/8" Wall Ht. with
- 7/16" OSB Sheathing
- Raindrop Housewrap Installed
- Treated Mudsill on Foundation Wall
- 6" R19 Fiberglass Insulation
- Vapor Barrier
- ½" Finished Gypsum Board

## INTERIOR WALLS

- 2"x4" Studs 16" O.C.
- 8' 1 1/8" Wall Ht.
- ½" Finished Gypsum Board
- R11 Sound Batts Insulation installed  
in Laundry & Bath Walls
- 1 Coat Builders Grade Paint

## SIDING

- CertainTeed Mainstreet Siding Vinyl 4"  
Double Shadow Edge or Dutch Lap
- Prefinished Rollex Aluminum  
Maintenance Free Soffit and Fascia  
System

## ROOF & CEILINGS

- Engineered Trusses 24" O.C.
- 12" Energy Heel
- 15/32" OSB Roof Sheathing
- R38 Fiberglass Insulation
- Vapor Barrier
- Ceiling 5/8" (or ½" Sag-Resistant)  
Finished Gypsum Board
- 24" Gable End Overhang
- 24" Eave Overhang
- CertainTeed XT-25 Year Shingle
- 15# ASTM Felt
- Ice & Water Shield in Valleys and  
Eaves 1 Row or 3'
- Shingle Vent Installed on Peaks

**CORNERSTONE IS A CUSTOM HOME BUILDER.**

**SPECIFICATIONS LISTED ARE THE BASICS TO THESE PACKAGES.**

## **EXTERIOR DOORS & WINDOWS**

- Thermatru® 1 ¾" Insulated Fiberglass Entry Door with Aluminum Clad Jamb
- Pella® Encompass Vinyl Windows with Drywall returns

## **INTERIOR DOORS & TRIM**

- Colonial Oak Trim and Flush Doors  
Real Oak Wood (not simulated wood pattern)
- Prefinished to Custom Color

## **FLOORING**

- Carpet and Vinyl

## **BATHROOM & KITCHEN**

- Flat Panel Oak Cabinets
- Vanities with Laminate Tops

## **PLUMBING**

- Water Sense Plumbing Fixtures
- 50 Gallon Electric Water Heater

## **HVAC SYSTEM**

- Gas Forced Air 92% Efficient or better
- Furnace with MERV8 Filter

## **ELECTRICAL**

- 200 AMP Service Panel
- Hook up for stove, washer, and dryer
- Smoke Detectors per code
- Carbon Monoxide Detectors per code

## **OPTIONS & UPGRADES**

- Two Car Garage
- Covered Front Porches
- Exterior Door & Window Options
- Siding Materials & Colors
- Kitchen Cabinets & Vanities
- Kitchen Countertop Styles/Colors
- Plumbing Fixtures & Finishes
- Lighting Fixtures & Finishes
- Interior Trim & Doors Styles/Colors
- Hardware Styles/Colors
- Exterior Decks
- Roofing Materials & Colors
- Soffit & Fascia System Materials & Colors
- Fireplaces

**CORNERSTONE IS LICENSED AND INSURED TO PERFORM  
CONSTRUCTION SERVICES IN BOTH WISCONSIN AND MICHIGAN.**

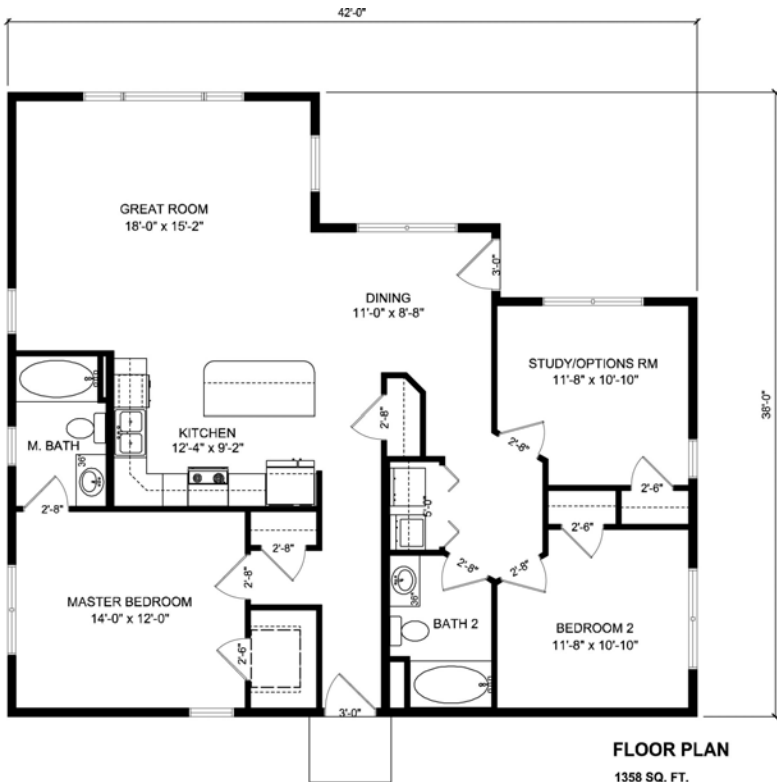
# THE HAVEN



Length: 42'

Total Area: 1,358 Sq. Ft.

Width: 38'



# THE SPORTSMAN



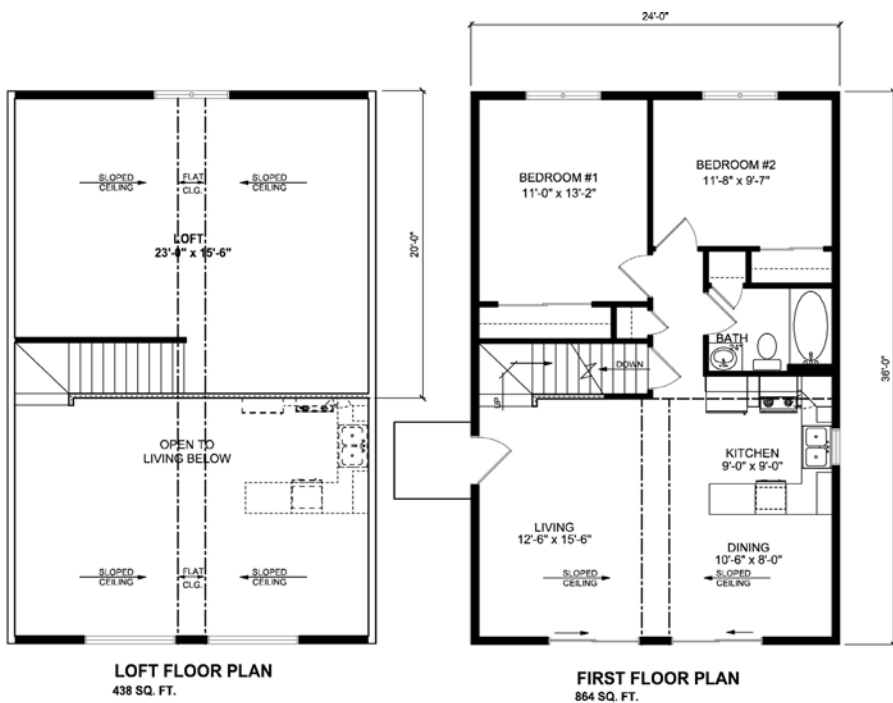
Length: 36'

Width: 24'

First Floor: 864 Sq. Ft.

Loft: 438 Sq. Ft.

Total Area: 1,302 Sq. Ft.



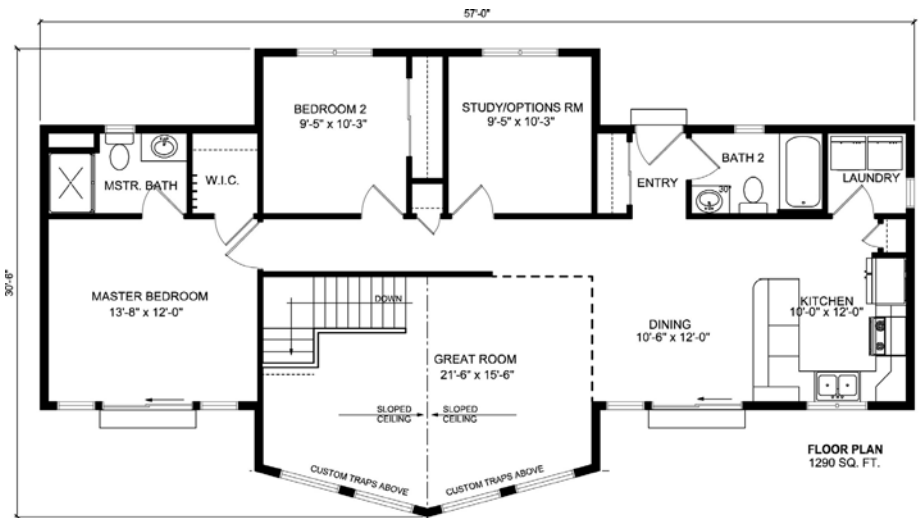
# THE WILDERNESS RETREAT



Length: 57'

Width: 30'

Total Area: 1,290 Sq. Ft.





# THE GETAWAY



Length: 43'

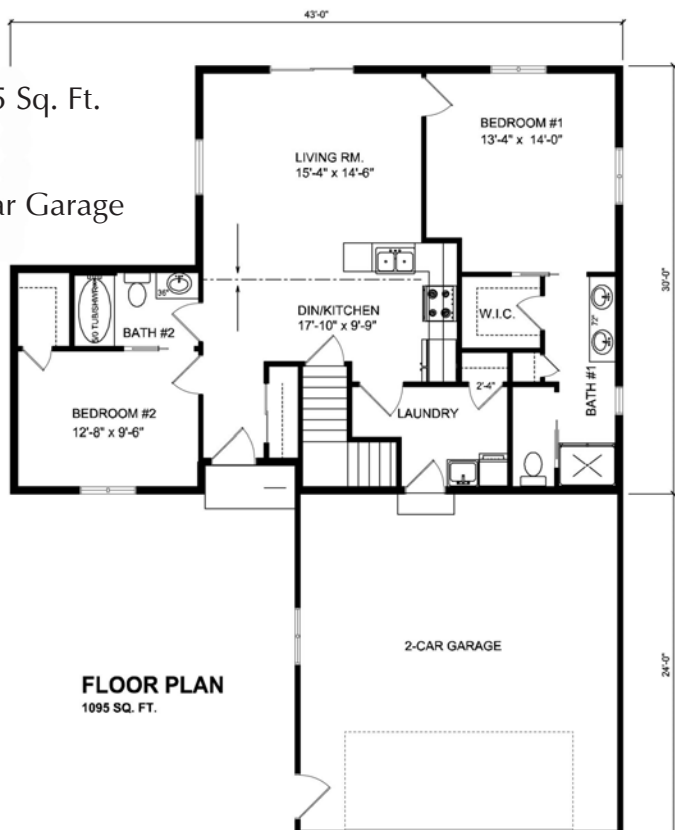
Width: 30'

Total Area: 1,095 Sq. Ft.

Included:

Attached Two Car Garage

23' x 24'





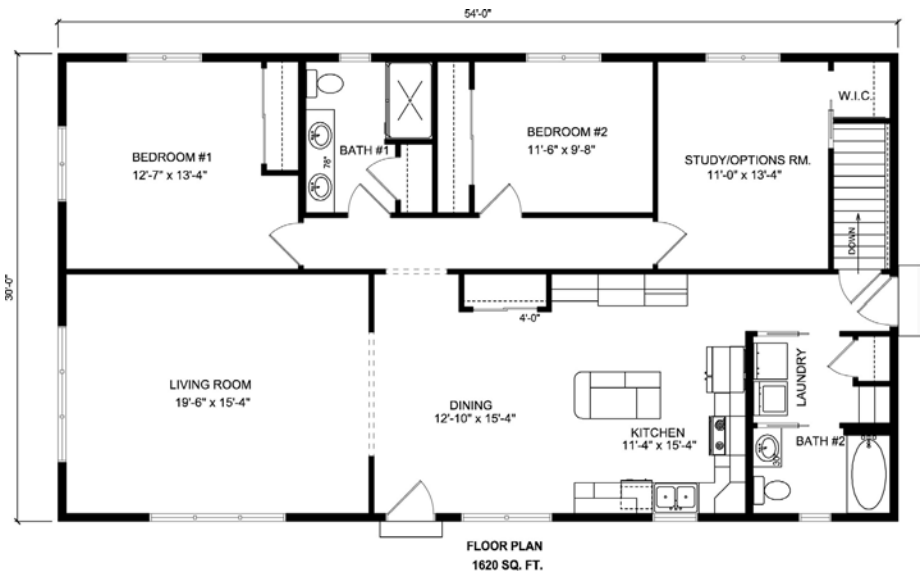
# THE WOODLAND CAMP



Length: 54'

Width: 30'

Total Area: 1,620 Sq. Ft.



# THE BAY VIEW



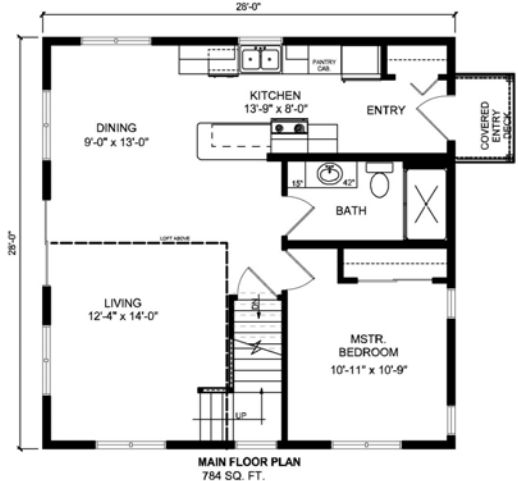
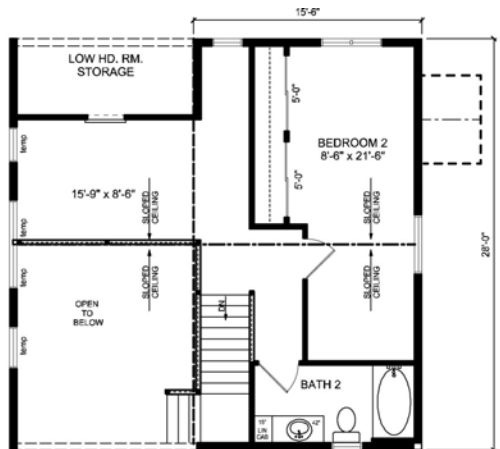
Length: 28'

Width: 28'

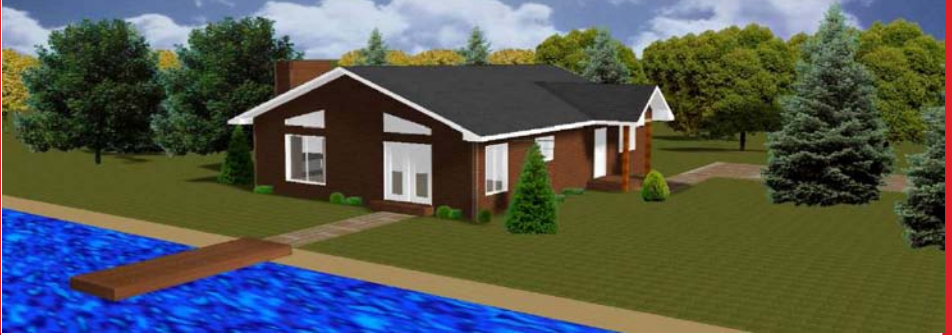
First Floor: 784 Sq. Ft.

Second Floor: 503 Sq. Ft.

Total Area: 1,287 Sq. Ft.



# THE WEEKENDER



Length: 40'

Total Area: 1,210 Sq. Ft.

Width: 30'

Included:

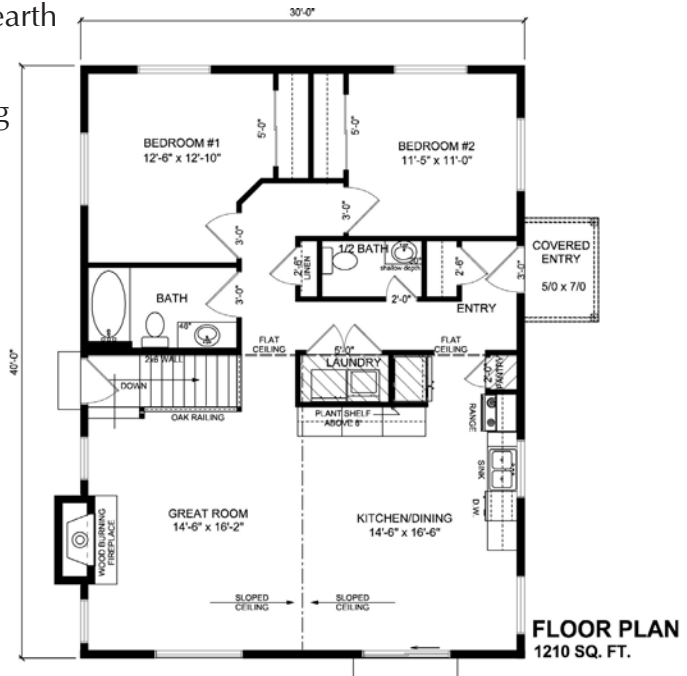
36" Wood Burning Fireplace

6' x 12" Cedar Mantel

6' Limestone Hearth

Cultured Stone

Floor to Ceiling





At CornerStone Custom Builders, Inc., our mission is to provide our customers with exceptional design and construction services that exceed expectations and at the same time adhere to environmentally responsible, sound development practices. Every member of the CornerStone team is dedicated to delivering outstanding workmanship and a superior product. We strive to earn the trust and respect of our customers by maintaining the highest levels of fairness, professionalism, honesty, and accountability while building relationships that last a lifetime.

**Eagle River**  
Intersection of Hwys.  
45, 17, 70 & 32  
**715.479.0001**

**Minocqua**  
3 Miles South of the  
Bridge on Hwy. 51  
**715.356.0001**

**Rhineland**  
Intersection of  
Hwys. 47 & K  
**715.362.7888**

**Visit our website, let us help you with your building needs.**  
**[cornerstonecustombuilders.com](http://cornerstonecustombuilders.com)**

